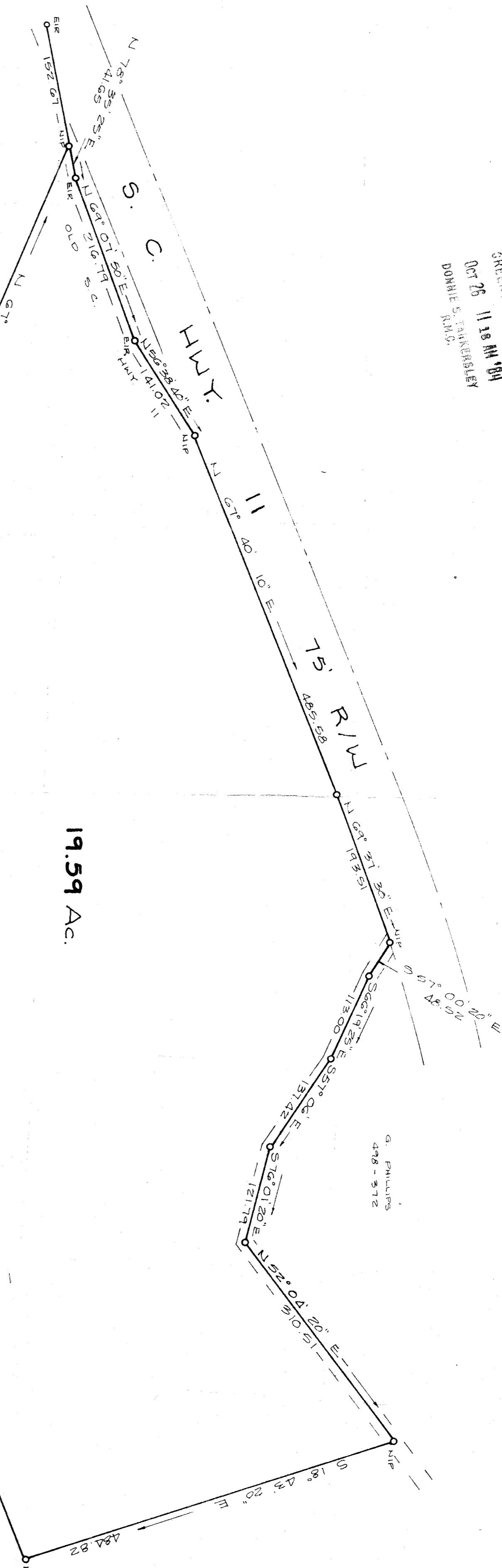
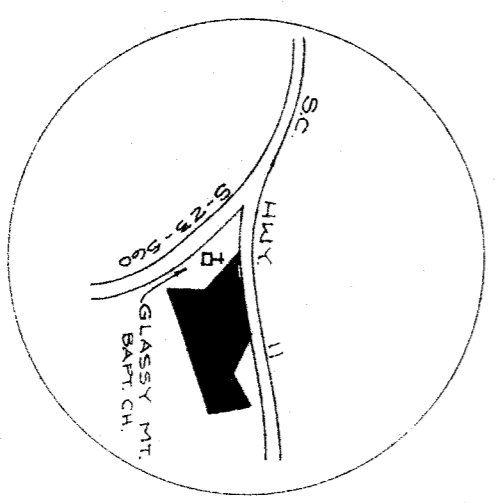


FILED
 GREENVILLE CO. S.C.
 OCT 26 11 18 AM '84
 DONNIE S. TARKER/STLEY
 R.M.O.



19.59 Ac.

GLASSY MT BAPTIST CHURCH
 BB - 369



ARNOLD E. & PAULINE H. EMERY

GLASSY MTN. TWP., GREENVILLE CO., S. C.

LEGAL REFERENCE D.B. 590 P. 242

SAM T. MARLOWE & ASSOCIATES

REG. LAND SURVEYOR 5549

COLUMBUS NO. CAR.

OCT 26 1982

10-Z-26

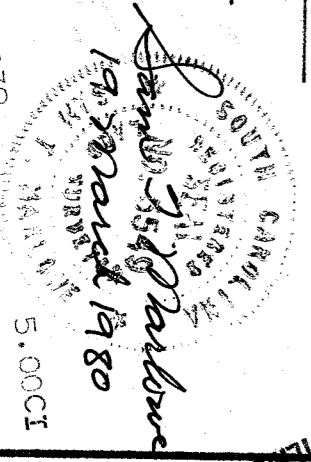
G.W. FITTMAN ESTATE
 83-560

12575

SCALE: 1" = 100'



12 DECEMBER 1978



2 OCT 26 84 1039

RATIO OF PRECISION 1:148,436

89-5

920 B